



**SPYDERCRANE**  
**URW295 SERIES**  
**MINI-CRAWLER CRANE**





**24"**  
**wide**

*when compacted  
in travel mode*



**31ft** Tip Height  
**37ft** with Jib



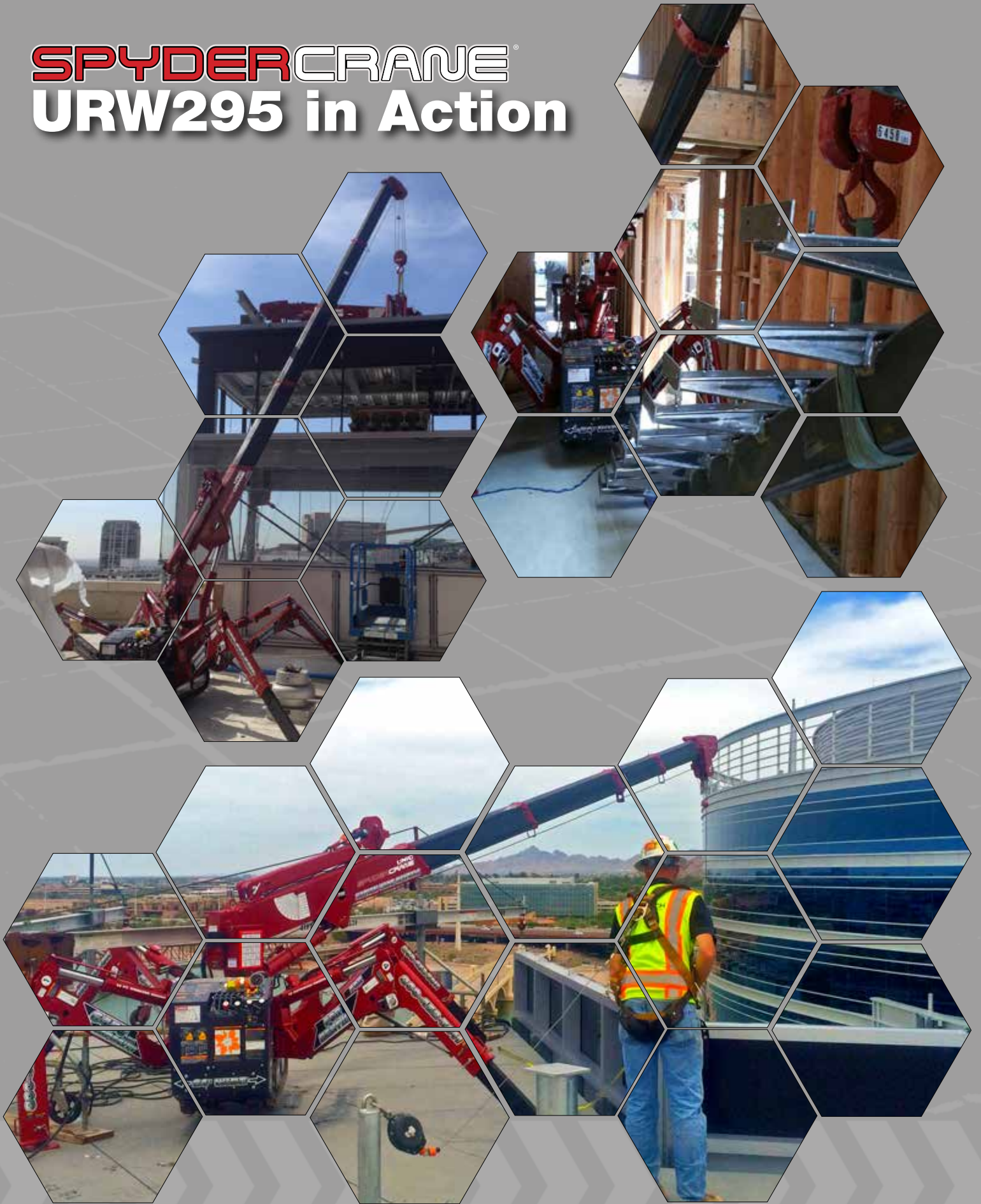
**U-WAVE**  
Wireless Radio  
Remote Control

**6,450**  
lbs Capacity





# SPYDERCRANE<sup>®</sup> URW295 in Action



# LOAD CHARTS

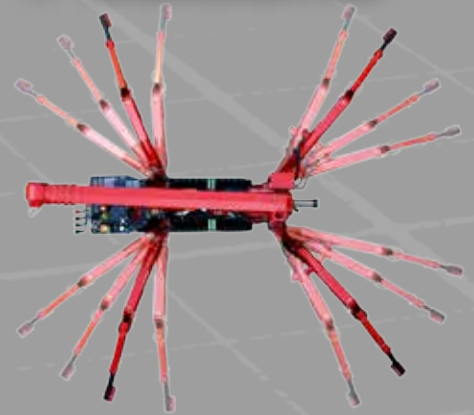
## LOAD CHART

Lifting capacity varies depending on outrigger configuration and boom length and angle.

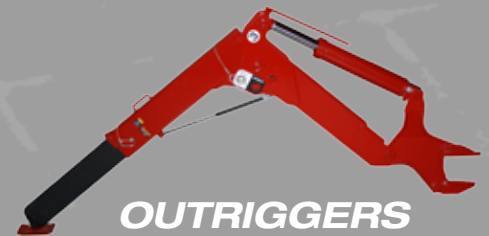
BOOM SECTION 1 EXTENDED   BOOM SECTION 1 + 2 EXTENDED										
Working Radius (ft.)	3	4.5	5	6	7	8	10	11	12.58	
Outriggers Maximum (lbs.)	6,450	6,450	5,850	4,950	4,350	3,800	2,850	2,450	2,000	
Outriggers Minimum (lbs.)	4,450	4,450	4,450	3,150	2,250	1,600	1,100	950	600	
BOOM SECTION 1 + 2 + 3 EXTENDED										
Working Radius (ft.)	7	8	9	10	11	12	14	15	17.62	
Outriggers Maximum (lbs.)	3,050	3,050	3,050	2,750	2,450	2,150	1,650	1,450	1,000	
Outriggers Minimum (lbs.)	1,850	1,550	1,250	1,150	1,000	850	600	550	300	
BOOM SECTION 1 + 2 + 3 + 4 EXTENDED										
Working Radius (ft.)	11	12.5	13	15	16	17	18	20	22.61	
Outriggers Maximum (lbs.)	1,950	1,950	1,750	1,350	1,200	1,100	1,000	850	660	
Outriggers Minimum (lbs.)	1,000	800	750	600	510	450	370	280	200	
BOOM SECTION 1 + 2 + 3 + 4 + 5 EXTENDED										
Working Radius (ft.)	12.5	13.5	15	16	18	19	21	23	25	27.59
Outriggers Maximum (lbs.)	1,280	1,280	1,050	920	750	700	590	500	440	350
Outriggers Minimum (lbs.)	850	700	600	530	420	380	300	220	180	130

# 52

Possible  
Outrigger  
Positions

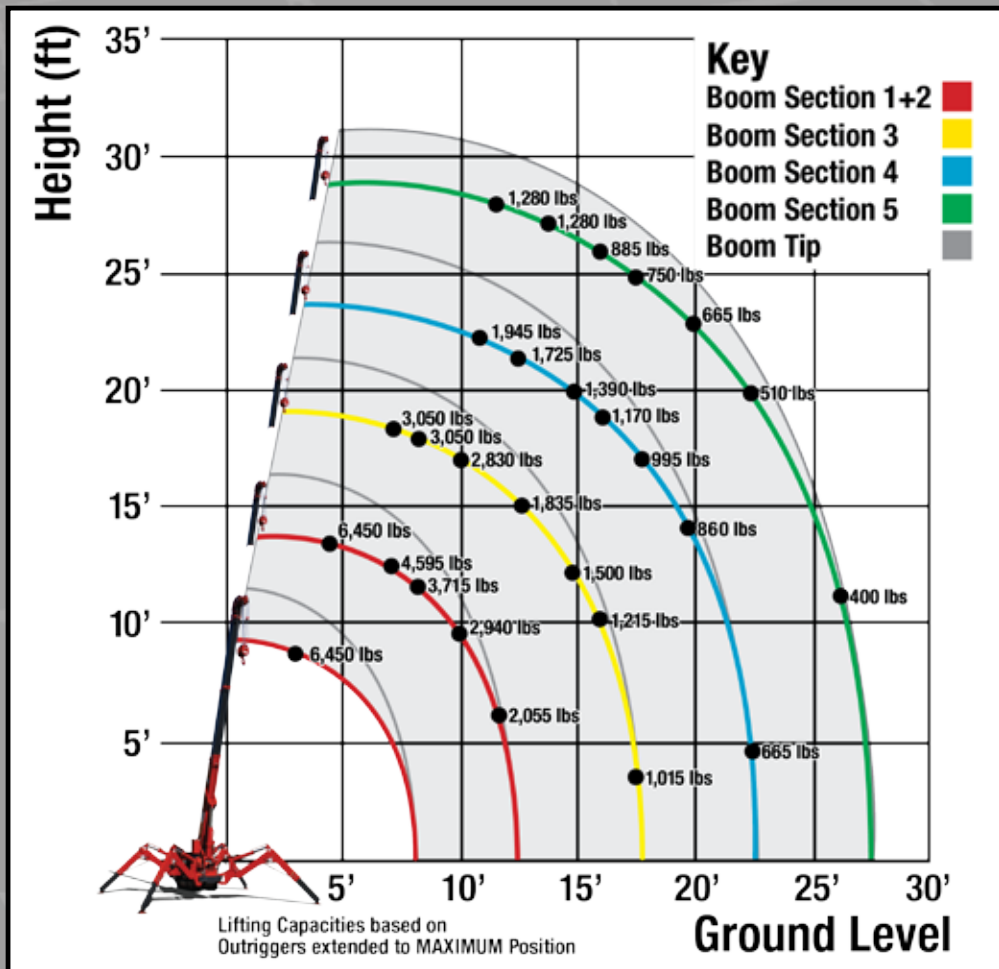


**OUTRIGGERS  
MINIMUM**



**OUTRIGGERS  
MAXIMUM**

## WORKING RADIUS





# LOAD CHARTS

## Rated Load for Extension Jib in lbs.

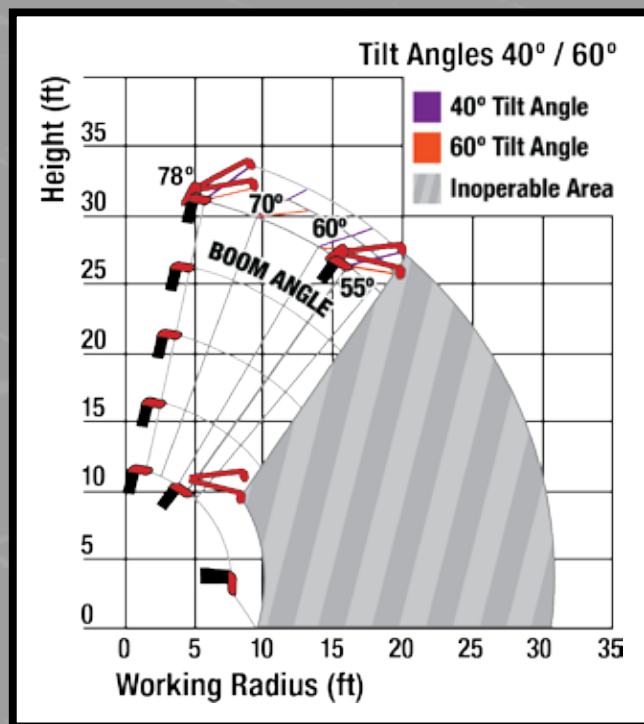
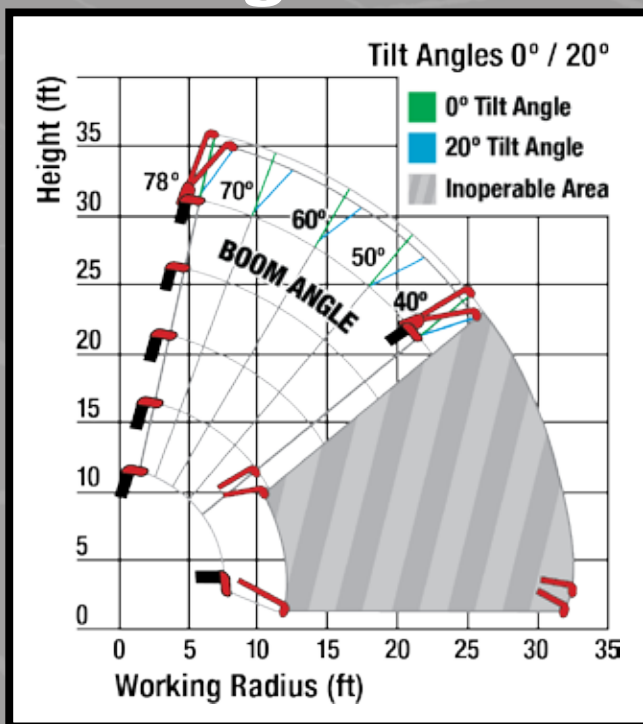
### 1st TO 4th BOOM SECTIONS

Boom Angle	78°	75°	70°	65°	60°	55°	50°	40°	30°	20°	10°	0°
Tilt Angle	0°	1,580	1,580	1,580	1,140	810	590	590	<b>PROHIBITED AREA OF CRANE OPERATIONS</b>			
	20°	1,580	1,580	1,580	1,140	810	590	590				
	40°	1,580	1,580	1,580	1,140	810						
	60°	1,580	1,580	1,580	1,140	810						

### 5th BOOM SECTION ONLY

Boom Angle	78°	75°	70°	65°	60°	55°	50°	40°	30°	20°	10°	0°
Tilt Angle	0°	920	920	920	590	480	370	260	<b>PROHIBITED AREA OF CRANE OPERATIONS</b>			
	20°	920	920	920	590	480	370	260				
	40°	920	920	920	590	480						
	60°	920	920	920	590	480						

## Working Radius - Jib



## Rated Load for Searcher Hook in lbs.

### 1st TO 4th BOOM SECTIONS









Working Radius (ft.)	12.5	13	15	16	18	20	21	23	26	27.5
Outriggers Maximum (lbs.)	1,560	1,560	1,060	940	740	570	520	410	310	240
Outriggers Minimum (lbs.)	560	460	330	280	190	120	110	<b>PROHIBITED AREA OF CRANE OPERATIONS</b>		

### 5th BOOM SECTION ONLY

Working Radius (ft.)	12.5	13	15	16	18	20	21	23	26	30	32.5
Outriggers Maximum (lbs.)	1,120	1,010	870	740	670	570	510	410	310	220	130
Outriggers Minimum (lbs.)	560	460	330	280	190	120	110	<b>PROHIBITED AREA OF CRANE OPERATIONS</b>			

1 Part line - 2,100 lbs | 2 Part line - 4,100 lbs | 3 Part line - 5,000 lbs | 4 Part line - 6,450 lbs

# SPECIFICATIONS

	URW295CP1URS & URW295CP1URS/P	URW295CP1UMRS & URW295CP1UMRS/P	URW295CP1UBRS	URW295C4URS	URW295C4UMRS
<b>Engine / Motor</b>	 	  			
<b>Crane Capacity</b>	<b>6,450 lbs @4.6ft</b>				
<b>Max Working Radius</b>	<b>1.4 - 28.0 ft</b>				
<b>Tip Height</b>	<b>31 ft</b>				
<b>Dimensions when Folded (ft.)</b>	<b>2.0 x 4.6 x 9.0 (W x H x L)</b>			<b>2.0 x 4.6 x 9.1 (W x H x L)</b>	<b>2.0 x 4.6 x 9.0 (W x H x L)</b>
<b>Weight</b>	<b>4,100 lbs</b>	<b>4,380 lbs</b>	<b>4,170 lbs</b>	<b>4,245 lbs</b>	<b>4,525 lbs</b>
<b>Winch Speed</b>	Capacity: 1,600 lbs. at 4th layer   Single-Line				
	131 ft/min at 4th layer	131 ft/min at 4th layer Electric: 89 ft/min at 4th layer	131 ft/min at 4th layer	131 ft/min at 4th layer	131 ft/min at 4th layer Electric: 89 ft/min at 4th layer
<b>Telescopic System</b>	<b>Boom Length: 8.3 ft (retracted) to 28.4 ft (extended)</b> <b>Boom Type: 5-Section hydraulically telescoping boom, with hexagonal box construction</b>				
<b>Telescoping Speed</b>	<b>20 ft / 20 seconds</b>				
<b>Boom Lift Speed</b>	0° - 78° / 11 sec	Gas: 0° - 78° / 11 sec Electric: 0° - 78° / 15 sec	0° - 78° / 15 sec	0° - 78° / 11 sec	Diesel: 0° - 78° / 11 sec Electric: 0° - 78° / 15 sec
<b>Accessories &amp; Options</b>	<ul style="list-style-type: none"> <li>• SPYDERWEB 5-Axis fixed Glass Manipulator - Attaches directly to boom for rigid application</li> <li>• 6 ft offsettable Jib with Searcher Hook and Single-Line Swivel Ball</li> <li>• Custom SPYDERCRANE Trailer - Includes Track Mats, Tool Box, Outrigger Pads and Fuel Containers</li> </ul>		<ul style="list-style-type: none"> <li>• Auxiliary Winch Kit - 2,000 lb Single-Line Pull, 330 ft., 5/16" Wire Rope, 90 FPM</li> <li>• MYLAR Non-Marking Tracks</li> <li>• Single-Part Reeving and Two-Part Reeving capability</li> </ul>		

Product specifications are subject to change without notice. No specific training or license is required to operate the SPYDERCRANE in most areas, but operators are responsible for knowing and meeting all safety requirements and regulations.

Visit us on the web at [SmileyLiftingSolutions.com](http://SmileyLiftingSolutions.com)

# ACCESSORIES

## SPYDERWEB GLASS HANDLER

The SPYDERWEB Glass Handler is perfect for lifting and moving large format glass panels when combined with a SPYDERCRANE Mini-Crawler Crane.

- Lifts up to 1,323 lbs
- Mounts directly to the crane arm or at the crane hook
- Remote control activates the rotating, swiveling and tilting cylinder as well as the pneumatic functions
- Battery powered (24V)

## AERIAL PLATFORM

The SPYDERCRANE Aerial Platform allows a worker to get close to the work.

- Gravity hung, self-leveling design
- Maximum capacity of 300 lbs
- Easy-on/off Pin Design
- Lifetime Structural Warranty

## CUSTOM TRAILER

Transport your SPYDERCRANE and tools to the jobsite with ease.

- 8,000 lbs GVWR
- Protective Headboard
- Track Mats
- Fuel Containers
- 14 ft Length | 8 ft Width
- Storage Box for Tools/Rigging
- Outtrigger Pads

## AUXILIARY WINCH

The optional Auxiliary Winch provides extra lifting capacity when attached to a SPYDERCRANE.

- 2,000 lbs Single-Line Pull
- Winch Speed: 90 feet per minute
- 330 ft Wire Rope length, 5/16" dia.

## MYLAR TRACKS

MYLAR Tracks are ideal for indoor environments where standard tracks would create unsightly marks on the floor.

- Non-Marking Tracks
- Ideal for indoor use on delicate floor surfaces

*View More Accessories at*  
**SmileyLiftingSolutions.com**



# WHAT IS A SPYDERCRANE® ?

A SPYDERCRANE Mini-Crawler is a mini-crane that has been designed and built for working in low access confined areas either indoors or outdoors. It is mounted on a dual track chassis with "spider-type" legs for its outriggers.

SPYDERCRANES are revolutionizing many industries by offering a flexible and versatile crane that while strong enough to lift up to 6.6 tons, can be used where a conventional truck mounted crane or carry-deck crane will not have access due to its size.



As the North American Distributor of SPYDERCRANES, Smiley Lifting Solutions has a wide range of mini-crawler cranes available. Whether your jobs are small or large, there is a SPYDERCRANE model that is the perfect fit. With a wide range of engine types and accessories available, we can provide you with a SPYDERCRANE to fit your exact needs.



5326 W. Mohave St | Phoenix, AZ 85043  
844.264.8994 | 602.442.4000  
Visit us on the web at [SmileyLiftingSolutions.com](http://SmileyLiftingSolutions.com)