



HTC 8675 II

HTT 8675 II

75 U.S. ton | 70 metric ton Hydraulic Truck Crane
75 U.S. ton | 70 metric ton Truck Terrain Crane

- 41-127 ft (12.5-38.7 m) four-section, latching boom with no charted capacity deductions for telescoping loads.
- 38-64 ft (11.6-19.5 m) two-piece, bi-fold, on-board lattice attachment with 2°, 15°, 30°, 45° offsets - optional
- Two 16 ft (4.9 m) lattice inserts provide a total attachment length of 96 ft (29.3 m) - optional
- 230 ft (70.2 m) maximum tip height
- Modular style counterweights
- 16,880 lbs (7 656.6 kg) maximum winch line pull
- 460 fpm (140.2 m/min) maximum winch line speed
- Next generation operator's cab with improved visibility and ergonomics
- Automated Manual Transmission
- Front and rear air ride suspension
- Anti-lock (ABS) brakes
- Three lockable storage boxes
- "Stow 'n Go" steel pontoons



HTC 8675 LTT 8675

SERIES II

- 4-section full power latching boom with attachment flexibility
- Big, wide cab with outstanding visibility
- Winches deliver impressive numbers of line pull and line speed
- Counterweight flexibility, big engine and transmission power, along with air-ride promise incredible mobility on the road or on the job



Innovative two-part paint coating technology, coupled with pre-assembly paint process, provides the finest quality coating system available today.



Right side viewing camera

Large engine doors allow for easy access



Integrated air conditioning

Swing camera

Folding viewing mirror for travel

Large west coast-style rear viewing mirrors

Non-slip surface strips on carrier deck



Carrier-mounted outrigger controls, located on each side of the carrier, include an engine throttle-up switch for fast outrigger deployment. For fine level adjusting of the carrier, throttle can be taken down to idle.

Outrigger position sensing (OSHA)

Chrome exhaust shield and piping

Daytime running lights

Self-storing fifth outrigger pontoon

Integrated air conditioning (not a roof-mounted system)

Aluminum wheels and radial tires with chrome and stainless wheel accents

Full air, S-cam anti-lock (ABS) brakes on all wheel ends with automatic slack adjusters

*North American model with EPA 2013 engine shown



Powerful and responsive hydraulics

- Six pump, pressure compensated hydraulic system allows simultaneous and precise function of boom hoist, winch and swing.
- Two-speed hydraulic piston motor system delivers superior hoisting. Matched size optional front and rear winches provide equal max line pulls of 16,880 lbs (75.0 kn) and max line speeds of 460 fpm (140.2 m/min) on 16" (.41 m) root diameter grooved drums.
- Drum rotation indicators - standard.
- Bi-directional hydraulic swing motor mounted to a planetary reduction unit for 360° swing. Spring applied hydraulic released 360° swing park brake provides infinite swing park positions as well as free swing when control is in a neutral position.



Winch viewing camera

Optional hoist drum cable follower and optional third wrap indicators

Access ladders and folding guardrails

Standard 10,800 lbs (4.8 mt) counterweight

Rear camera

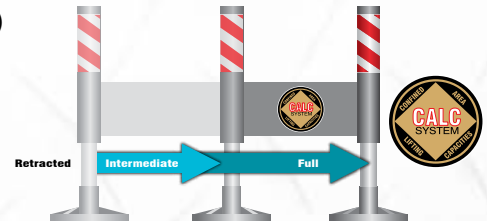


Stow 'n Go outrigger pontoons are quickly and easily stored and secured for travel, eliminating the need to remove the pontoon each time the crane moves. Pontoon storage space is also available on rear fenders and side access ladders.

The Confined Area Lifting Capacities (CALC) system provides three outrigger positions:

- full retraction
- intermediate extension
- full extension

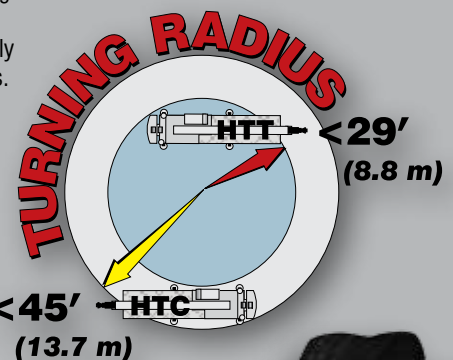
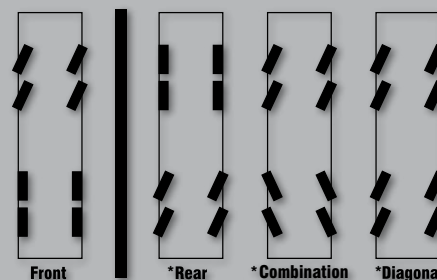
Outrigger pins eliminate guesswork by automatically positioning outriggers at midpoint position.



HTT Designed for amazing job-site maneuverability

Steerable all wheel axles, in conjunction with super single tires, makes the HTT even harder to beat on the job-site, and NO changes to the on-outrigger capacity charts.

- Drive and steer capabilities for the rear axles
- Four steering modes: Independent front, Independent rear, All wheel, Diagonal
- Rear axles self-center and lock in the straight ahead position for high speed travel
- Turning radius under 29 ft (8.8 m) at the edge of the tire
- 445/65R22.5 tires front and rear that are interchangeable
- Only one spare rim and tire combination is needed
- Transverse (cross-axle) differential locks that greatly improve traction on unimproved job-site conditions.



Superior capacities and extension ranges



38-64 ft (11.67-19.5 m) two-piece bi-fold, lattice attachment with 2°, 15°, 30°, and 45° offsets. Optional: 10-35-58 ft (3.0-10.7-17.7 m) three-piece bi-fold, lattice attachment with 0°, 15°, 30°, and 45° offsets

**The only
greaseless,
high-capacity
formed booms
designed and built
in North America!**

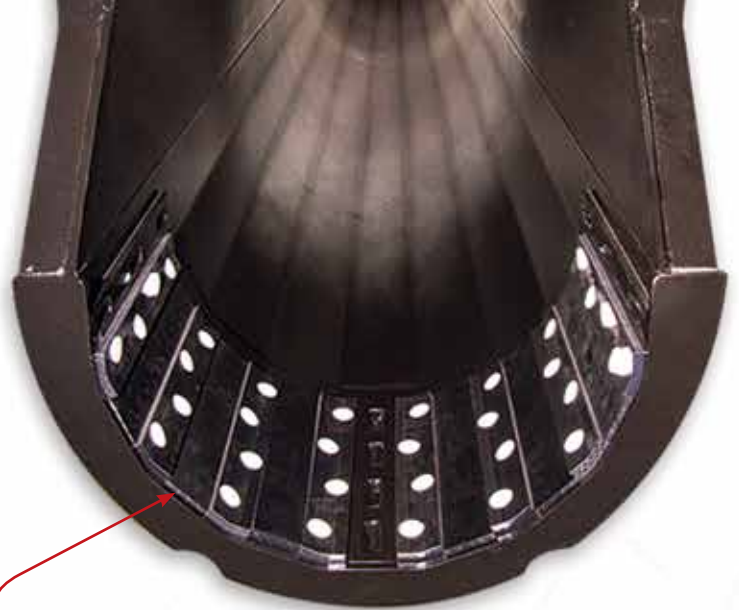
4-section latching boom with attachment flexibility

- 41-127 ft (12.5-38.7 m) latching boom with four boom modes for superior capacities throughout the extension range
- No charted capacity reductions for telescoping loads
- Boom requires no greasing because of ingenious Teflon wear pucks impregnated in the full contact wear pads
- No minimum boom angle for extending or retracting the boom sections
- 38-64 ft (11.6-19.5 m) two-piece, bi-fold, on board lattice attachment with 2°, 15°, 30°, and 45° offsets
- Two 16 ft (4.9 m) lattice inserts provide a total attachment length of 90 ft (27.4 m)
- 230 ft (70.2 m) maximum tip height

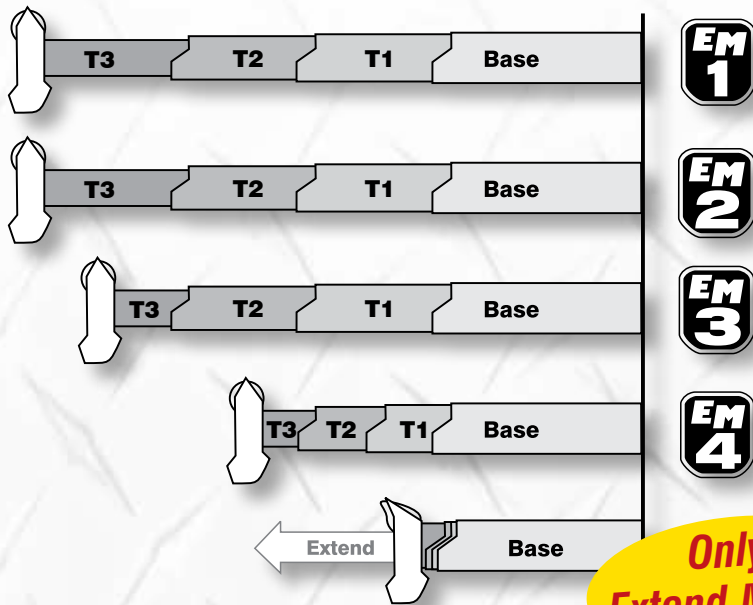




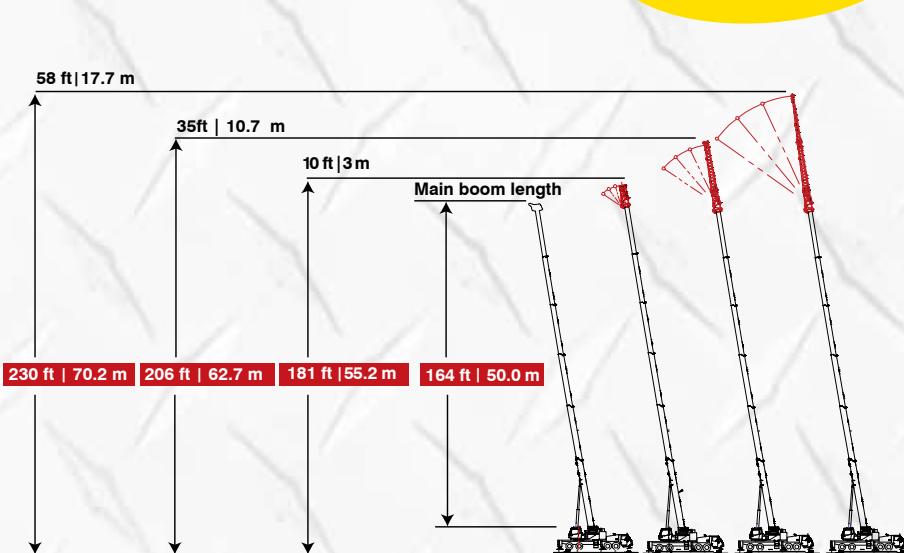
Quick reeve boom head eliminates the need to remove the becket when it becomes necessary to change the reeving.



Greaseless boom pads

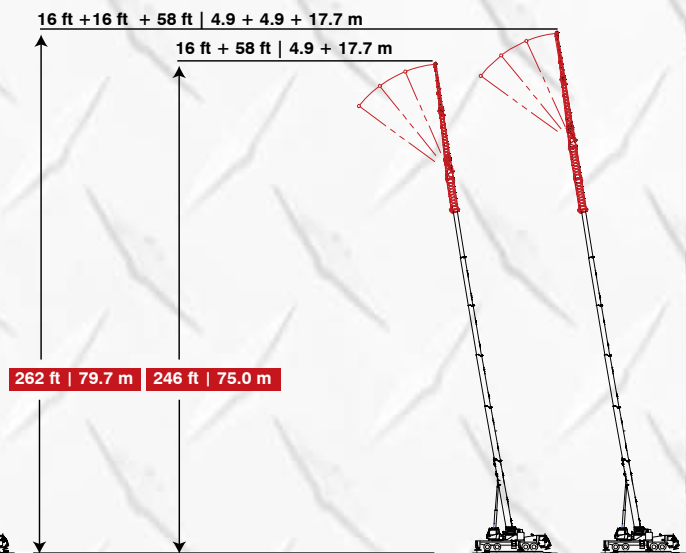


**Only 4
Extend Modes!**



Tip-Heights - Optional On-board Lattice Fly

10 ft - 35 - 58 ft | 3.0 - 10.7 - 17.7 m three piece, bi-fold, on-board lattice attachment with 0°, 15°, 30°, and 45° manual offsets.



Tip-Heights - Optional Lattice Fly Extension

The optional 58 ft | 17.7 m two or three-piece offsettable bi-fold fly can be extended by adding up to two optional 16 ft | 4.9 m lattice inserts with 0°, 15°, 30°, and 45° manual offsets.



Roomier and quieter operator's cab

- **Extra large front window** seamlessly merges into the roof window
- Sliding left side door, right and rear windows, and swing up top window provide **excellent ventilation**
- All gauges, switches, indicators and controls are placed in the operators forward line of sight for **excellent ergonomics**
- **All gauges and switches are backlit** for excellent visibility when the cab working lights are switched to the on position
- **Integrated air conditioning** utilizes the same ventilation outlets as the standard heating system

Total crane operating system

Link-Belt PULSE

Link-Belt Pulse is the Link-Belt designed total crane operating system. It includes the rated capacity limiter, boom extend mode controller (EMC), self-diagnostic capabilities and continuous monitoring of multiple crane functions and conditions. To aid operators in a safe and efficient operation, its high-resolution, color-intense graphic display provides excellent contrast even in direct sunlight.



Superior accessibility

Access to the operator's cab and engine compartment is superb with strategically located ladders and steps. The pull-out CabWalk™ slides out from its secured travel position underneath the operator's cab to give the operator a platform to stand on for easy entry and exit from the cab.



Multiple counterweight configurations give you capacities for any size job

- Standard - total of 10,800 lbs (4.8 mt) of removable counterweights. Capacities for four different counterweight configurations.
- Optional - up to 18,400 lbs (8.2 mt) of removable counterweights. Capacities for up to six different counterweight configurations.
- All configurations can be raised and lowered by controls located on each side of the upper structure for ease of installation and removal.



Out of cab external light bar



Internal light bar



Telematics. You own the data!

Cellular-based data logging and monitoring system that provides:

- Viewing options for sharing data with distributor and Link-Belt
- Location and operational settings
- Monitor routine maintenance intervals
- Crane and engine monitoring
- Diagnostic and fault codes

Road and job site ready!



Outstanding mobility on the road and on the job site

- **Cruise control**
- **Automated transmission** (no clutch pedal) – 12 speeds forward, 2 speeds reverse with two modes of operation: **fully automatic** and **semi-automatic**
- Job site travel is **permissible with counterweight** for exceptional job site versatility.
- **Boom dolly/trailer ready** when equipped with optional boom float kit, rear electrical and air connections.
- Engine **compression brake**
- Ether injection system—**optional**



Optional rear electrical and air connections



• **Air-ride suspension** front and rear provides a smooth ride and precise handling. Optional air-ride **lift system** holds the rear suspension retracted while the crane is on outriggers.

Comfortable carrier cab:

- Dash-mounted **comprehensive instrumentation** with back-lit gauge
- Roll up/down door window provides **excellent ventilation**
- Fully adjustable **air-ride fabric seat**
- **Suspended pedals**



All counterweight configurations can be raised and lowered by controls located on each side of the upper structure for ease of installation and removal



Storage and accessibility

There are two standard **locking storage boxes** with options for up to three boxes

Right side storage and ladder





Link-Belt Construction Equipment Company is a leader in the design, manufacture and sales of telescopic and lattice boom cranes with headquarters and manufacturing facilities in Lexington, Kentucky, USA. Link-Belt is committed to the manufacture and service of high quality products that satisfy customers worldwide

Towards that end, Link-Belt has pursued a strategy of growth and investment. It has moved aggressively to seize more global market share by producing a broader range of products and strengthening distribution and personnel around the globe.

Link-Belt is also home to a family of passionate professionals with a legacy of innovation and cutting-edge technology spanning over 140 years. These professionals, in a 740,000 sq. ft. (68 748 m2) manufacturing facility and with a culture of continuous innovation, have pushed Link-Belt to be the most modern crane manufacturer in North America.

Your crane investment is always protected... with your Link-Belt distributor.

When you invest in a Link-Belt crane, you invest in a legacy of outstanding customer support dating back to 1874. The ultimate value of a machine begins with state-of-the-art design and quality manufacturing, but it is the excellent Link-Belt distributor product support that determines its long term value. This philosophy has earned Link-Belt cranes the enviable position of traditionally commanding some of the highest resale prices in the industry.

"... to be
recognized
as a
leader in
**customer
service &
satisfaction.**"
— The Link-Belt Vision

Link-Belt® *Preferred*

As a member of Link-Belt Cranes user's group, you will have access to:

- A comprehensive online library of all parts, service and operator manuals for YOUR crane
- Interactive, live groundbearing calculations for YOUR crane
- Plus a vast array of information on new products, services and special offerings
- Online access to recommended spare parts lists, filter, lube and key lists plus maintenance information and more
- No annual fee or charges to access your crane information

**Link-Belt
was born
because our
founding father
understood the
importance of
replacement parts.**

William Howe Emery

Building on that principal...

- Trained technical specialists
- Faster and more efficient customer service
- State of the art computer information systems
- 24 hours a day, 7 days a week
- 72,000 sq. ft. Parts Distribution Center
- All parts in stock ship the same business day

**Link-Belt
CRANES
GENUINE
PARTS**

©Link-Belt is a registered trademark. Copyright 2017 All rights reserved. We reserve the right to change designs and specifications at any time.
Litho in U.S.A. 1963 8/17 #4514 (supersedes #4460) Lexington, Kentucky | www.linkbelt.com

Link-Belt
CRANES