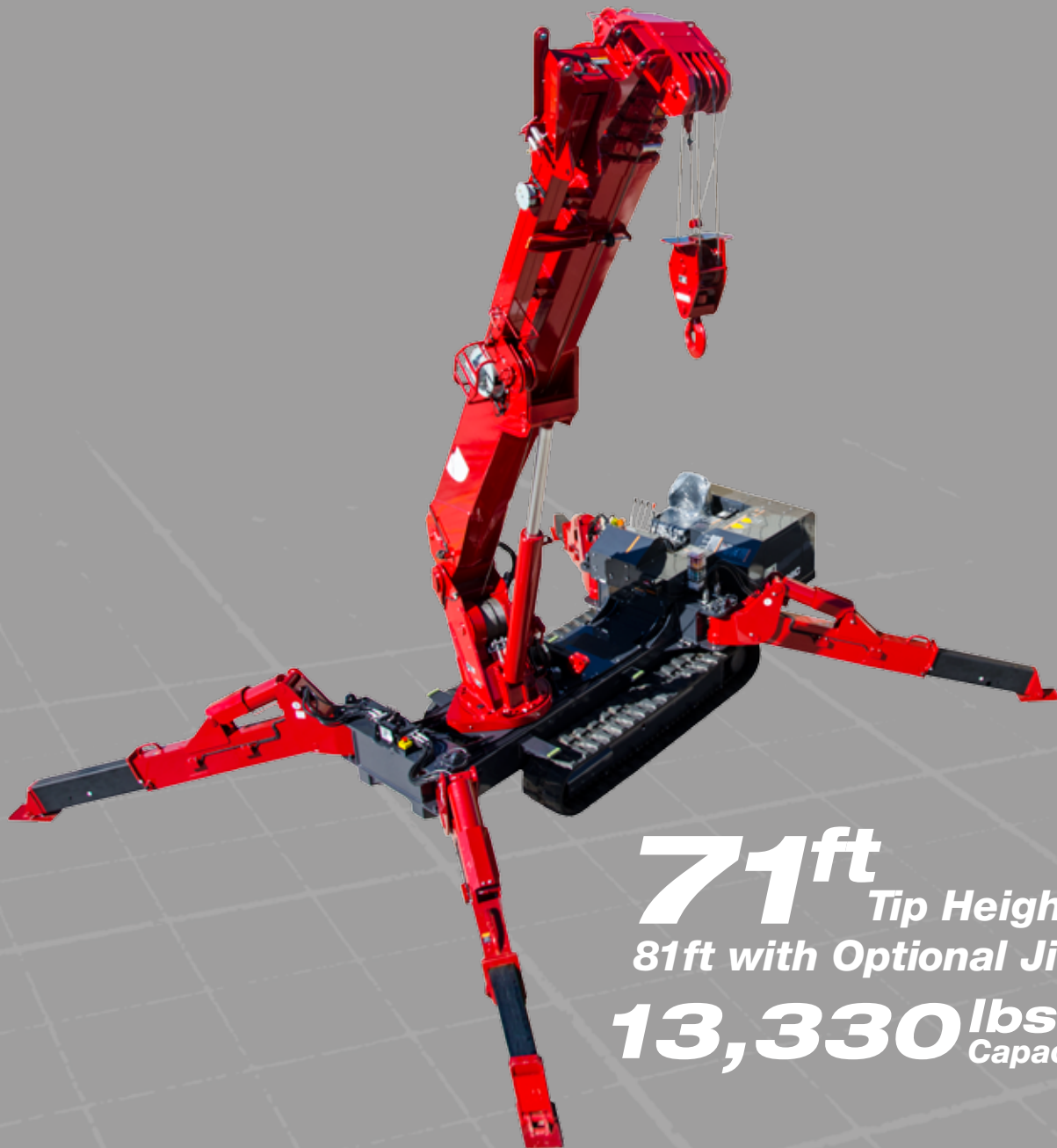


UNIC  
SPYDERCRANE®

URW706 MINI-CRAWLER  
CRANE



**71<sup>ft</sup>** Tip Height  
81ft with Optional Jib  
**13,330<sup>lbs</sup>** Capacity

# ENGINEERED TO GO WHERE OTHER CRANES CAN'T

Engineered and manufactured by the Japanese crane industry leader FURUKAWA UNIC, the SPYDERCRANE offers versatility, maneuverability and lifting capacity in a compact design which enables you to quickly, safely and easily meet all of your restricted and confined-area lifting requirements. SPYDERCRANES are exclusively distributed in North America by Smiley Lifting Solutions of Arizona. Each unit is backed by our 20-plus years of industry and application experience, a complete inventory of genuine spare parts and accessories and superior local support.

ASME/B-30.5 Compliant  
URW706 Spec Sheet - Oct 2015

# LOAD CHART

## 14.1 FT BOOM EXTENSION

Working Radius (ft.)	9.0	9.8	10.0	11.0	13.0	14.1					
Outriggers Maximum (lbs.)	13,330	13,330	13,200	12,480	10,890	8,810					
Outriggers Halfway (lbs.)	13,330	13,330	13,200	12,480	10,890	8,810					
Outriggers Minimum (lbs.)	13,330	13,330	13,200	12,480	10,270	8,370					

## 23.6 FT BOOM EXTENSION

Working Radius (ft.)	9.0	9.8	10.0	11.0	13.0	16.0	20.0	23.0	23.6		
Outriggers Maximum (lbs.)	13,330	13,330	13,160	12,300	10,650	8,600	6,400	5,040	4,500		
Outriggers Halfway (lbs.)	13,330	13,330	13,160	12,300	10,650	8,600	5,200	3,840	3,520		
Outriggers Minimum (lbs.)	13,330	13,330	13,160	12,300	10,440	5,900	3,550	2,630	2,420		

## 33.1 FT BOOM EXTENSION

Working Radius (ft.)	9.0	13.0	16.0	20.0	23.0	26.0	30.0	33.0	33.1		
Outriggers Maximum (lbs.)	10,140	10,140	8,340	6,450	5,370	4,140	2,920	2,200	2,200		
Outriggers Halfway (lbs.)	10,140	10,140	8,340	5,480	3,950	3,010	2,100	1,650	1,650		
Outriggers Minimum (lbs.)	10,140	10,140	6,200	3,640	2,750	2,010	1,470	1,030	980		

## 42.3 FT BOOM EXTENSION

Working Radius (ft.)	16.5	20.0	23.0	26.0	30.0	32.0	36.0	39.0	42.3		
Outriggers Maximum (lbs.)	6,580	5,630	4,840	4,230	3,300	2,700	2,200	1,900	1,100		
Outriggers Halfway (lbs.)	6,580	5,580	4,170	3,240	2,430	1,950	1,550	1,340	990		
Outriggers Minimum (lbs.)	6,100	4,000	2,960	2,350	1,670	1,290	1,050	840	630		

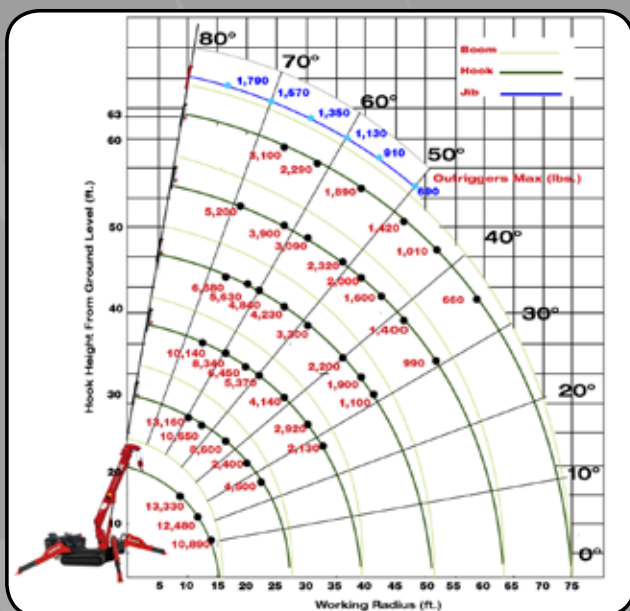
## 51.8 FT BOOM EXTENSION

Working Radius (ft.)	20.0	26.0	30.0	33.0	36.0	39.0	43.0	46.0	49.0	51.8	
Outriggers Maximum (lbs.)	5,200	3,900	3,090	2,720	2,320	2,000	1,600	1,400	1,220	990	
Outriggers Halfway (lbs.)	5,200	3,470	2,520	2,160	1,770	1,450	1,180	990	770	650	
Outriggers Minimum (lbs.)	4,300	2,470	1,780	1,520	1,210	1,000	750	610	480	390	

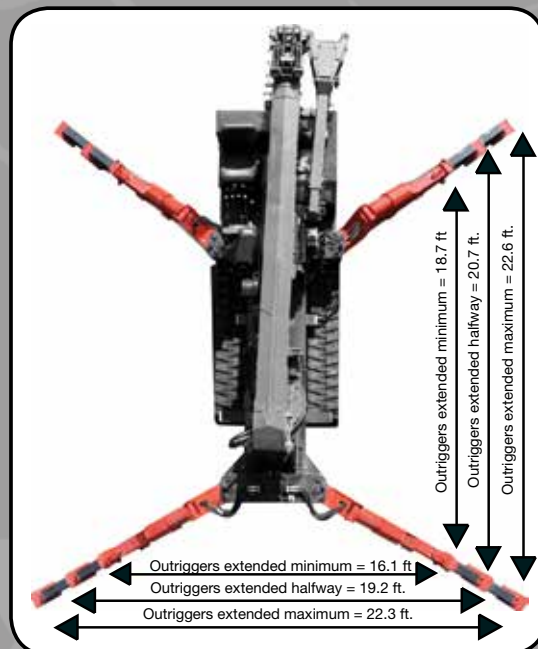
## 61.0 FT BOOM EXTENSION

Working Radius (ft.)	26.0	33.0	39.0	46.0	52.0	59.0	61.0				
Outriggers Maximum (lbs.)	3,100	2,290	1,890	1,420	1,010	660	550				
Outriggers Halfway (lbs.)	3,100	2,280	1,560	1,090	790	550	440				
Outriggers Minimum (lbs.)	2,540	1,630	1,120	720	500	300	230				

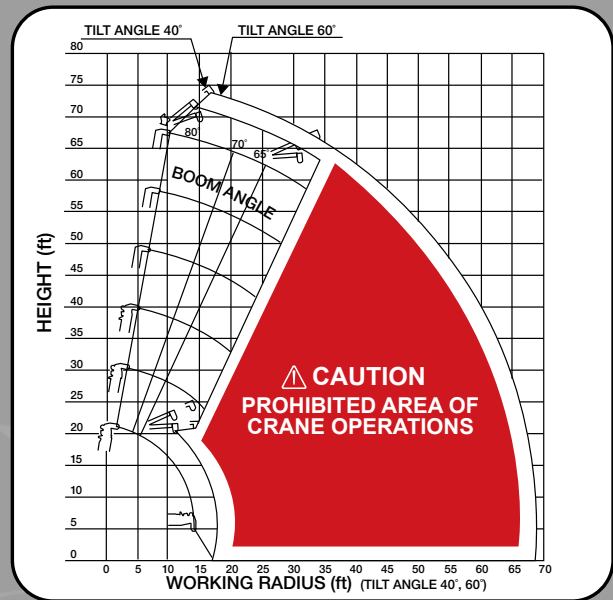
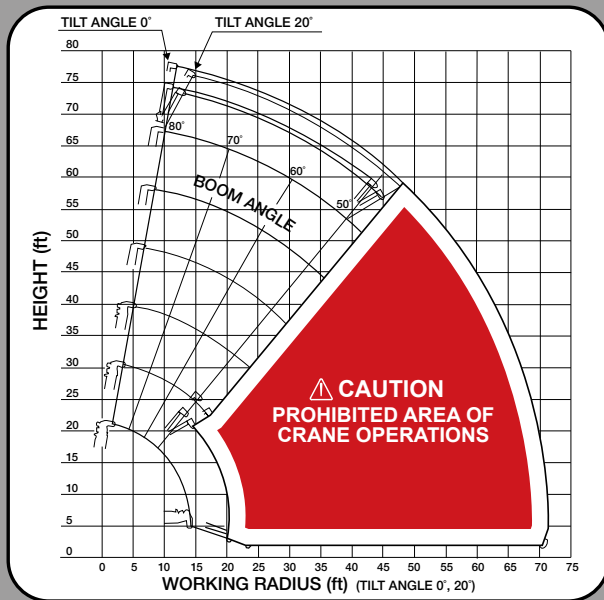
## WORKING RADIUS



## OUTRIGGERS



# EXTENSION JIB WORKING RANGE



## Rated Load for Extension Jib in lbs.





Boom Angle		80°	75°	70°	65°	60°	55°	50°	40°	30 °	20°	10°	0°
Tilt Angle	0°	1,790	1,790	1,570	1,350	1,130	910	690	PROHIBITED AREA OF CRANE OPERATIONS				
	20°	1,790	1,790	1,570	1,350	1,130	910	690					
	40°	1,350	1,350	1,130	910								
	60°	1,350	1,350	1,130	910								

## Rated Load for Searcher Hook in lbs.

Working Radius (ft.)	23	26	29	33	35	36	38	39	43	46	49	52	56	59	68.2		
Outriggers Maximum (lbs.)	1,760	1,760	1,760	1,760	1,650	1,430	1,170	1,040	680	550	460	370	260	220	PROHIBITED AREA OF CRANE OPERATIONS		
Outriggers Halfway (lbs.)	1,760	1,760	1,570	1,190	1,010	950	790	710	460	310	220						
Outriggers Minimum (lbs.)	1,740	1,370	970	530	400	350	240	220									



# SPECIFICATIONS

	URW706C4URS	URW706C4UMRS	URW706C4UBRS
Engine / Motor			 
Engine Manufacturer:	Yanmar	Yanmar / AC	Yanmar / DC /AC
Maximum Output:	31.5HP	Diesel - 31.5HP Electric - 10HP* (220V 3-Phase)	48V Battery 110V Electric
Tank Capacity:	19.6 gal	19.6 gal	19.6 gal
Starting Method	Electric Start		
Crane Capacity	13,330 lbs @9.8 ft		
Max Working Radius	61 ft		
Tip Height	71 ft (81ft with 10ft Jib)		
Turning Radius	Turns within its dimensions		
Dimensions when Folded (ft.)	5.48 x 7.17 x 18.4 (W x H x L)		
Weight	17,590 lbs	17,940 lbs	17,940 lbs
Outrigger Point Loading	(Specific point landing available upon request)		
Winch Speed	144.4 ft/min at 4th layer Hook: 36.1 ft/min at 4th layer	58.1 ft/min at 4th layer Hook: 14.4 ft/min at 4th layer	
Telescopic System	Boom Type: 6-Section hydraulically telescoping boom, with hexagonal box construction Hydraulic Telescope with Holding Valves: 47.2 ft. / 52 Seconds (47.2 ft. / 90 Seconds - Diesel/Electric/Battery model)		
Swing Rotation	360° Continuous Worm Drive		
Boom Lift Speed	0° – 80° / 16 sec		0° – 80° / 37 sec
Traction System	Travel Speed: Low - .75 mph   High - 1.8 mph		
	Gradability: 23°		
	Track Ground Pressure: 12.47 psi		

## Standard Features | Options | Safety Equipment

- Full-function radio remote control
- Centrally located infinite variable controls
- Onboard self-diagnostic computer system
- Hexagonal boom
- Anti-two block system
- Automatic hook stow system
- Over-winding prevention device and alarm
- Minimum wire rope automatic stop
- Hydraulic circuit pressure relief valve with bubble-style level for outrigger leveling
- Full LMI Overload System with operator's display
- Interlock Monitoring Outrigger and Boom System

### OPTIONAL:

- Custom SPYDERCRANE trailer with track mats, tool box, outrigger pads and fuel containers
- MYLAR® white non-marking tracks
- Gravity hung, self-leveling Work Platform



# UNIC SPYDERCRANE®

Visit us on the web at  
**SPYDERCRANE.COM**

A Division of



5326 W. Mohave St | Phoenix, AZ 85043  
844.264.8994 | 602.442.4000

Product specifications are subject to change without notice. No specific training or license is required to operate the SPYDERCRANE in most areas, but operators are responsible for knowing and meeting all safety requirements and regulations.