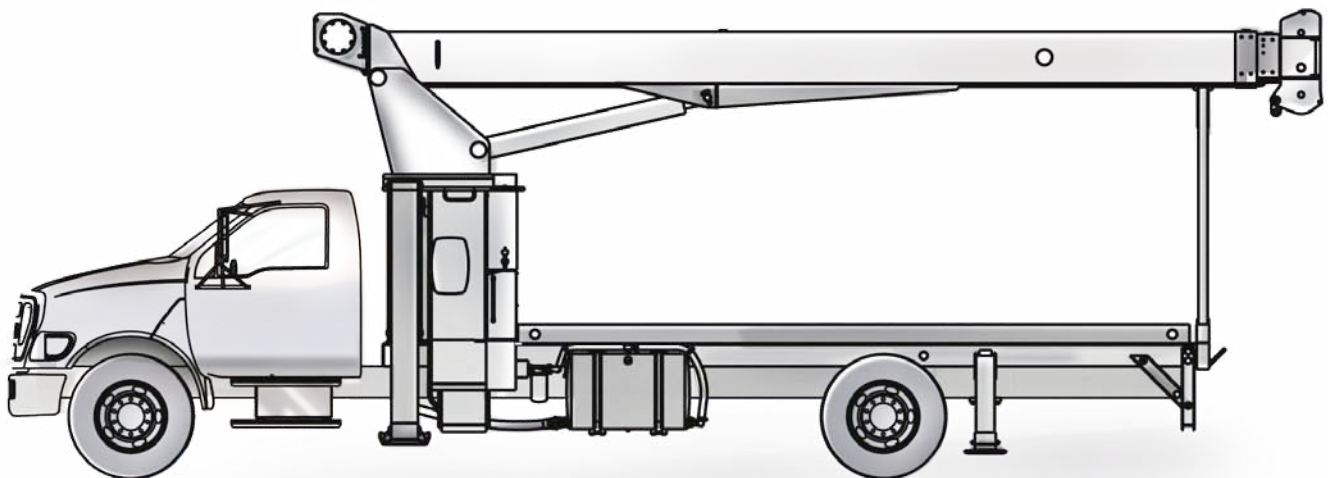




BOOM TRUCK CRANE BT 3063

DATASHEET - IMPERIAL

BT 3063



Features

- ▶ 15 t @ 5 ft capacity at rated distance from center of rotation
- ▶ 63 ft maximum boom length
- ▶ 73 ft maximum sheave height
- ▶ 24/40 ft optional jib
- ▶ 113 ft maximum sheave height with 40 ft jib
- ▶ Electronic load moment indicator
- ▶ Quick reeving boom head

WORKS FOR YOU.™



CONTENTS

BT 3063

Page:

Key

..... 3

Dimensions

Crane Dimensions 4, 5

Area of Operation 5

Mounting Specifications 5

Range Diagram 6

Load charts

Boom Load Charts 7

Jib, Retracted 7

Jib, Extended 7

Technical description

Boom, Jib and Rotation 8

Operator Controls 8, 9

Understructure 9

Optional Features 9



KEY

BT 3063

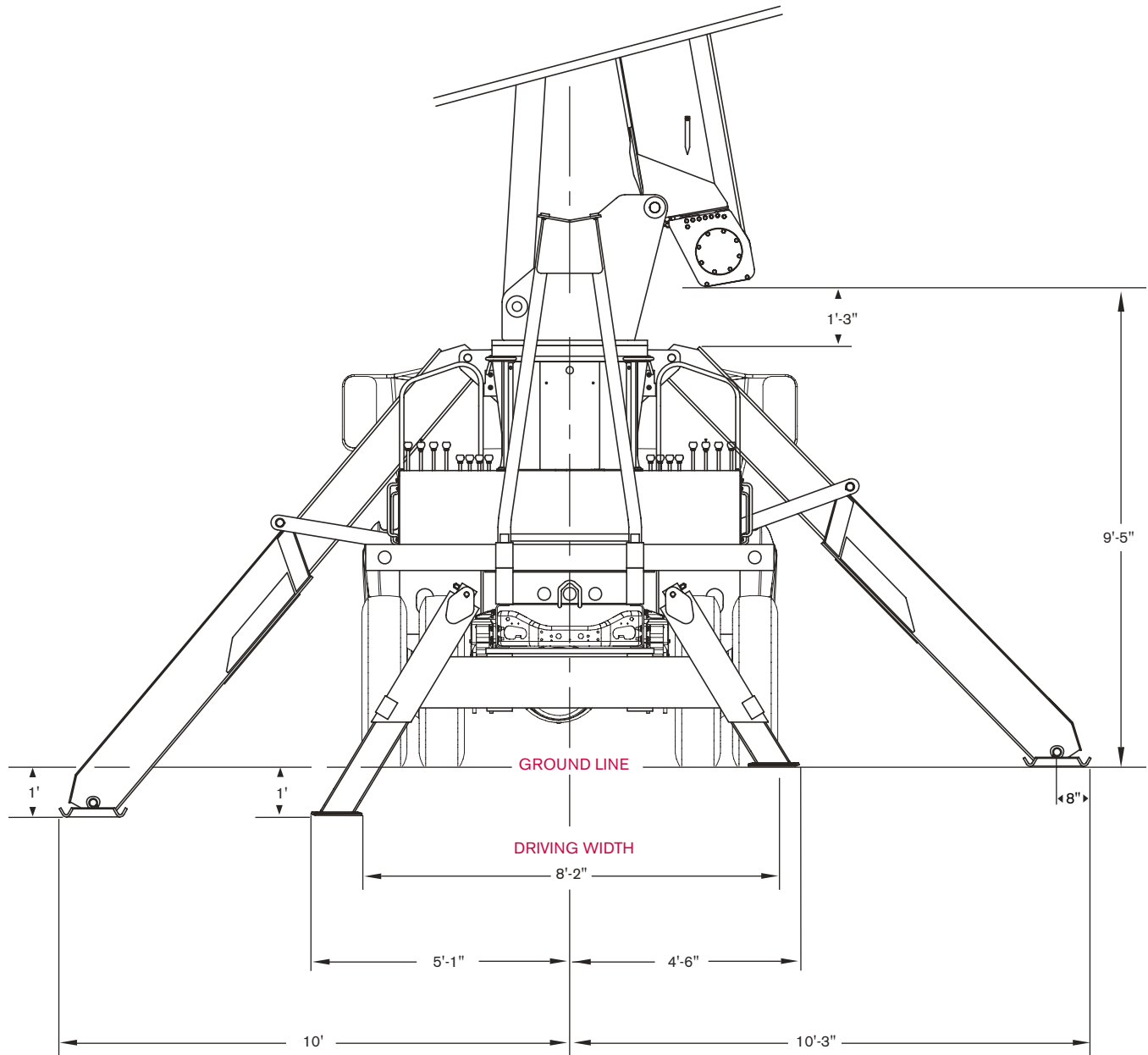
| | | | |
|---|-------------------------------------|---|----------------------------|
|  | Main boom |  | Main Hoist |
|  | Boom length |  | Hoist line speed |
|  | Tip height |  | Part line |
|  | Telescoping mode |  | Operator aid |
|  | Boom angle |  | Controls |
|  | Working radius |  | Hydraulics |
|  | Boom with jib |  | Working temperature |
|  | Boom head |  | Outriggers |
|  | Hook block |  | Working speeds |
|  | Hook to head sheave pin |  | Rope – Standard / Optional |
|  | Rotation / Allowable rotation range |  | Rope diameter |
|  | Boom angle |  | Rope length |
|  | Boom over the rear |  | Line pull |



DIMENSIONS

BT 3063

Crane Dimensions

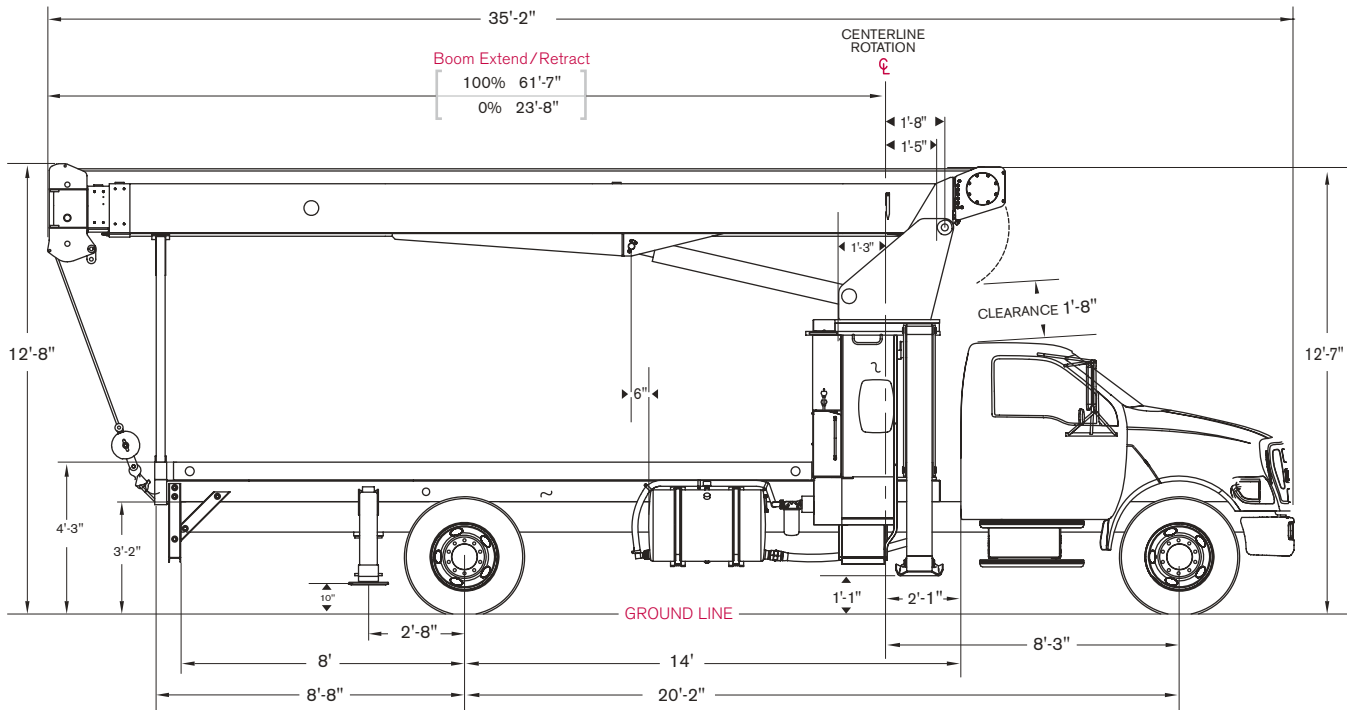




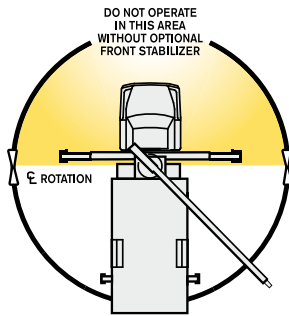
DIMENSIONS

BT 3063

Crane Dimensions



Area of Operation



Mounting Specifications

Chassis recommendation

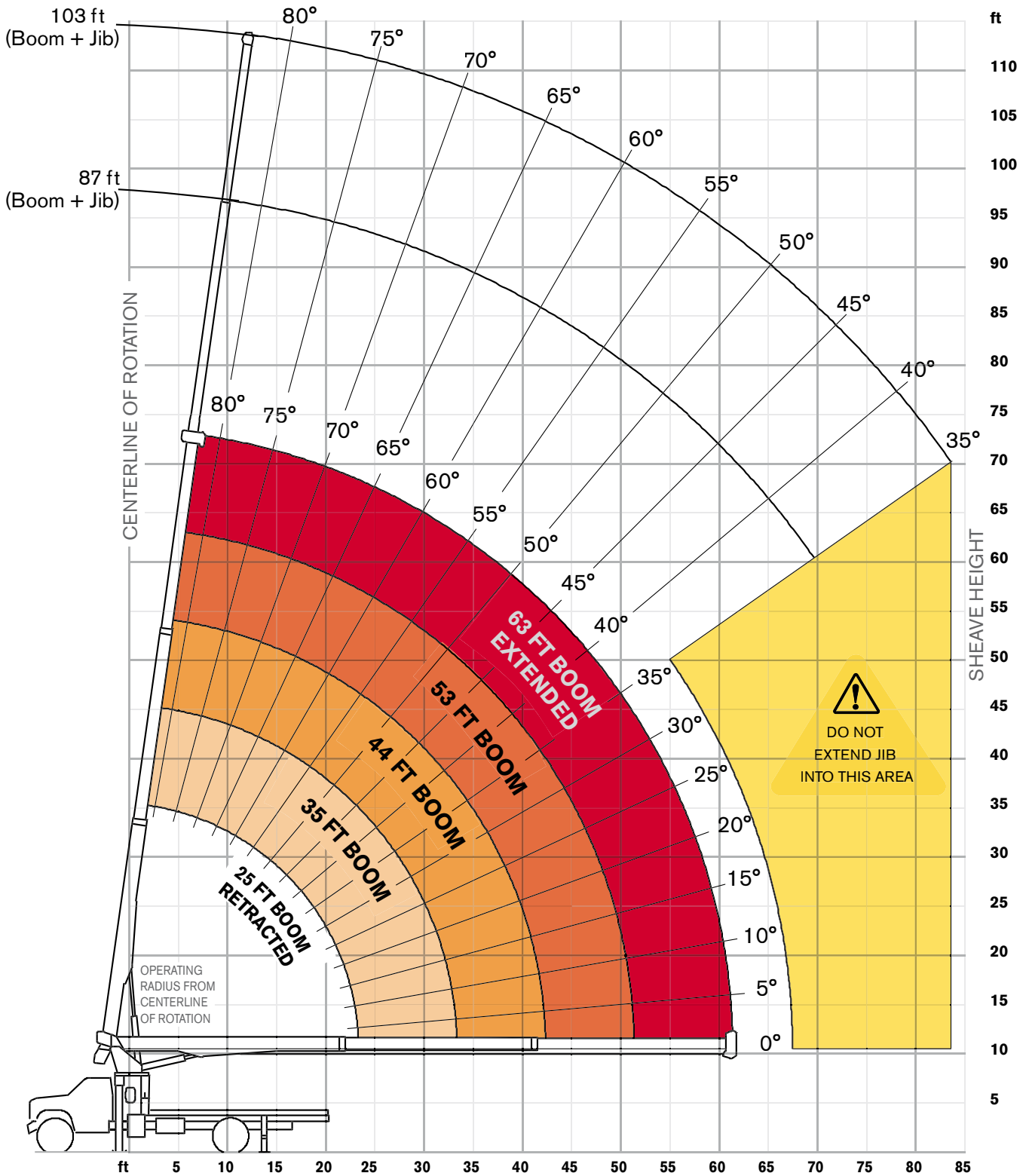
| | |
|-----------------------------------|---------------------|
| Combined axle weight rating | 33,000 lb |
| Front axle weight rating | 12,000 lb |
| Rear axle weight rating | 21,000 lb |
| Crane weight | 14,050 lb |
| Wheelbase | 242 +/- 4 in |
| Cab to axle | 168 +/- 4 in |
| Afterframe | 100 +/- 4 in |
| Frame height (unloaded) | 40 +/- 3 in |
| RBM per frame rail | 1,400,000 lb/in |
| Exhaust | Vertical, left side |



RANGE DIAGRAM

BT 3063

Outriggers Fully Extended (100%)

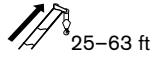




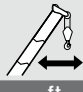

BOOM LOAD CHARTS

BT 3063

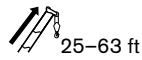
Outriggers Fully Extended (100%)





Standard ASME B30.5

|  ft | Boom Length | | | | |  ft |
|---|-------------|----------|----------|----------|----------|---|
| | 25 lb | 35 lb | 44 lb | 53 lb | 63 lb | |
| 5 | 30,000 | | | | | 5 |
| 8 | 20,150 | 15,800 | 15,625 | | | 8 |
| 10 | 17,050 | 14,750 | 14,300 | 12,600 | | 10 |
| 12 | 14,650 | 12,650 | 12,200 | 11,875 | 9,500 | 12 |
| 15 | 12,125 | 10,475 | 10,050 | 9,700 | 8,200 | 15 |
| 20 | 8,900 | 8,050 | 7,725 | 7,400 | 6,800 | 20 |
| 25 | | 6,400 | 6,075 | 5,975 | 5,575 | 25 |
| 30 | | 4,875 | 4,975 | 4,750 | 4,475 | 30 |
| 35 | | | 4,100 | 4,000 | 3,725 | 35 |
| 40 | | | 3,100 | 3,325 | 3,100 | 40 |
| 45 | | | | 2,775 | 2,600 | 45 |
| 50 | | | | 2,200 | 2,250 | 50 |
| 55 | | | | | 1,900 | 55 |
| 60 | | | | | 1,450 | 60 |

With Jib, Retracted and Extended



Standard ASME B30.5

|  ft | Jib Capacities for All Boom Lengths | | | | | | | | | |  ft |
|---|-------------------------------------|-----------|-----------|-----------|-----------|-----------|-----------|-----------|-----------|-----------|---|
| | 35° lb | 40° lb | 45° lb | 50° lb | 55° lb | 60° lb | 65° lb | 70° lb | 75° lb | 80° lb | |
| 24 | 700 | 825 | 1,000 | 1,150 | 1,340 | 1,600 | 1,900 | 2,300 | 3,100 | 4,160 | 24 |
| 40 | 520 | 580 | 650 | 730 | 810 | 930 | 1,080 | 1,400 | 1,810 | 2,260 | 40 |

Notes to lifting capacity

Lifting capacities do not exceed 85% of tipping load. Weight of hook blocks and slings is part of the load, and is to be deducted from the capacity ratings. Consult operation manual for further details.






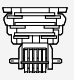


Note: Data published herein is intended as a guide only and shall not be construed to warrant applicability for lifting purposes. Crane operation is subject to the computer charts and operation manual both supplied with the crane.







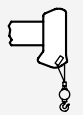
TECHNICAL DESCRIPTION

BT 3063

Boom, Jib and Rotation

| | | |
|---|---|--------------------------------|
|  | Three-section full power fully synchronized telescopic keel boom | |
|  | Boom length | 25–63 ft |
|  | Boom maximum sheave height | 73 ft |
|  | Boom elevation angle range (min/max) | -8° / 82° |
|  | Boom up/down time Boom extension/retraction time | 25/16 seconds 54/26 seconds |
|  | Boom head | Quick reeving |
|  | Maximum tip height: boom with jib 24/40 ft | 113 ft |
|  | 180 degree non-continuous rotation or 370 degree optional continuous rotation | |

Operator Controls

| | | |
|---|--|--|
|  | Hoist line pull | 11,400 lb |
|  | Hoist line speeds (3rd layer) | 186 ft/min |
|  | Rope diameter | 9/16 in |
|  | Breaking strength Permissible line pull | 33,600 lb 10,500 lb |
|  | Overhaul ball 1 sheave block | 7 t 17.5 t |
|  | 1 part line 2 part line 3 part line | 10,500 lb / 186 ft/min 21,000 lb / 93 ft/min 30,000 lb / 62 ft/min |



TECHNICAL DESCRIPTION

BT 3063



Fully proportional
Independent outrigger controls



Electronic load indicator

Understructure



Front: Link type
To outer edge of pad

20 ft 5 in

Rear: A-Frame
To outer edge of pad

10ft 2 in

Optional Features

- Two-stage jib
- Rotation resistant rope
- Multi-part load blocks
- Main hoist with 2 speed motor
- Heavy duty wood flatbeds
- Extra heavy duty wood flatbeds
- Extra heavy duty steel flatbeds
- Radio remote controls
- One-man or two-man baskets
- Hoist drum tensioner
- Continuous rotation
- Oil cooler
- Single front bumper outrigger
- Hydraulic hose reel
- Tool box



BT 3063

www.terexcranes.com

Effective Date: November 2010. Product specifications and prices are subject to change without notice or obligation. The photographs and/or drawings in this document are for illustrative purposes only. Refer to the appropriate Operator's Manual for instructions on the proper use of this equipment. Failure to follow the appropriate Operator's Manual when using our equipment or to otherwise act irresponsibly may result in serious injury or death. The only warranty applicable to our equipment is the standard written warranty applicable to the particular product and sale and Terex makes no other warranty, express or implied. Products and services listed may be trademarks, service marks or trade-names of Terex Corporation and/or its subsidiaries in the USA and other countries. All rights are reserved. Terex® is a registered trademark of Terex Corporation in the USA and many other countries. Copyright 2010 Terex Corporation..

Terex Cranes, Global Marketing, Dinglerstraße 24, 66482 Zweibrücken, Germany
Tel. +49 (0) 6332 830, Email: info.cranes@terex.com, www.terexcranes.com

Brochure Reference: TC-DS-I-E-BT 3063-11/10



WORKS FOR YOU.™