

**RUNNION**

Service • Parts • Financing • Rentals  
Dependable Equipment • Knowledgeable Technicians • Available Parts

# Tree Crane

*Manitex*

*Peterbilt*



708-447-3169

[www.runnionequipment.com](http://www.runnionequipment.com)



All New

**Manitex**



# Peterbilt Model 220 Truck with 22101S Boom







## The complete tree crane package

### Durable and reliable truck

- Single axle cab over chassis for unsurpassed driver visibility
- 194" short wheelbase with 11R 22.5 front steer tires for a nimble, highly maneuverable chassis
- Automatic transmission
- PACCAR PX-7 diesel engine with 260 HP and 660 ft lb torque
- Crane and truck weigh only 30,980 lb

**Tandem  
Axle Option  
Available!**



### Powerful and productive crane

- Highest capacity in its class at 22 tons
- 101', four section hydraulic boom with 111' tip height
- Two speed winch, 300 fpm
- Rear mounting gets you closer to your picking point

### Operator friendly

- 360° continuous rotation, with rider's seat always facing your load
- Pilot operated controls for smooth operation and open air seating for better communication and fewer blind spots
- LMI monitors crane configuration and assists operators
- Radio anti two block with no cables

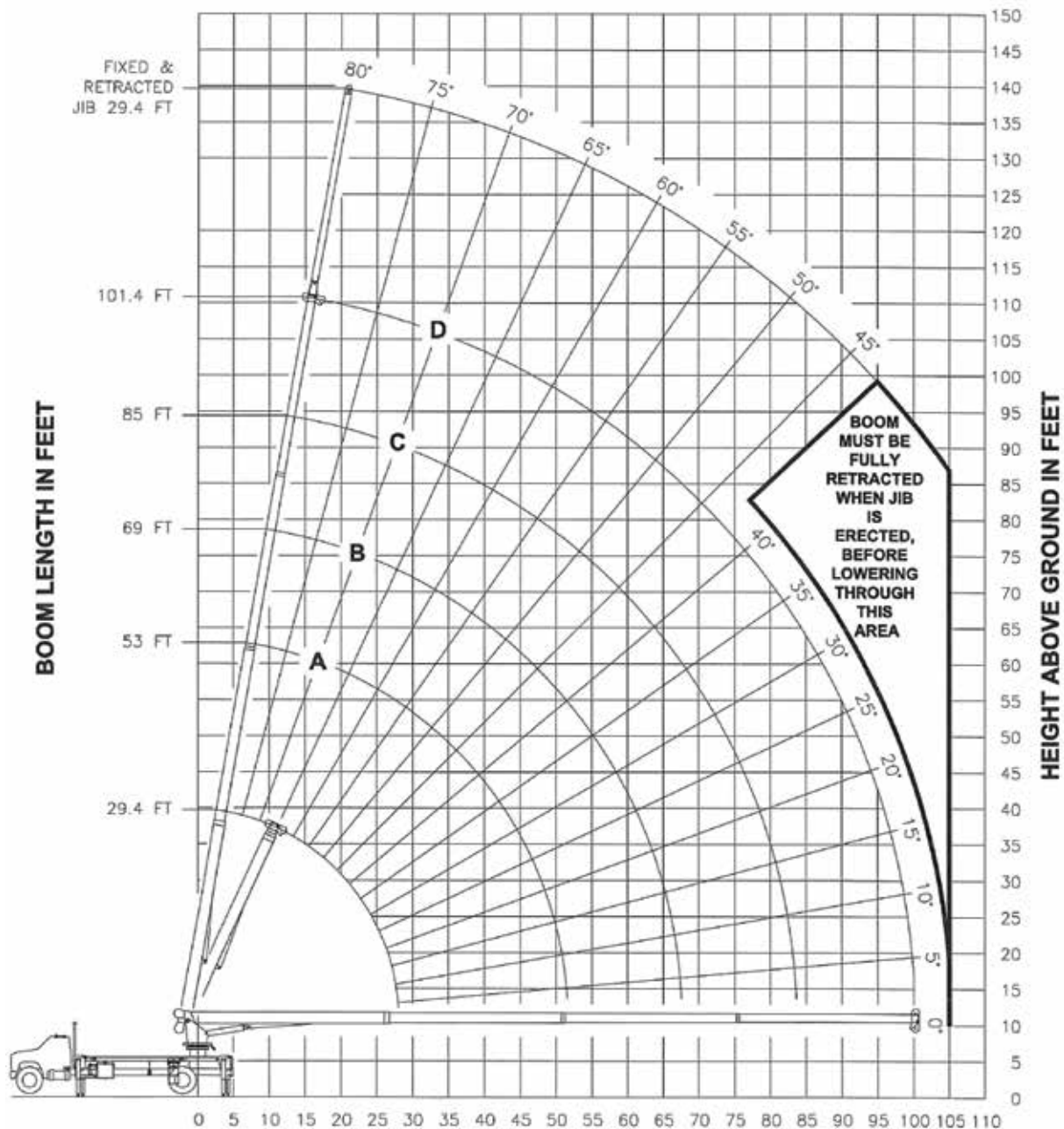
### Easy transport and maintenance

- Teflon wear pads eliminate the need for sticky boom grease
- Out and down outriggers, with only 19' total footprint
- Low overall height and only 11' 6" when stowed

# Peterbilt Model 220 Truck with 22101S Boom



Boom Length	Lift Capacity Range	Operating Radius
29.4'	9,910 – 44,000 lb	5' – 25'
53'	3,180 – 14,000 lb	12' – 50'
69'	1,750 – 14,000 lb	14' – 65'
85'	920 – 8,920 lb	20' – 80'
101.4'	390 – 6,000 lb	25' – 95'



Contact Runnion Equipment Today!

708-447-3169

www.runnionequipment.com

sales@runnionequipment.com