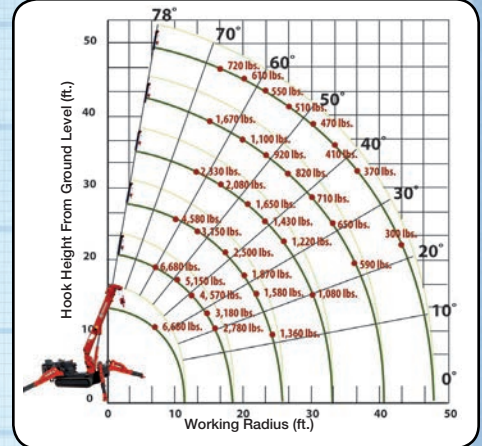


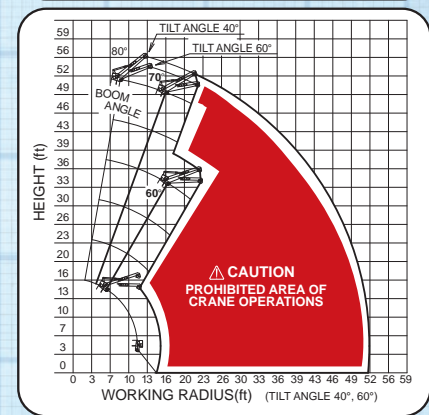
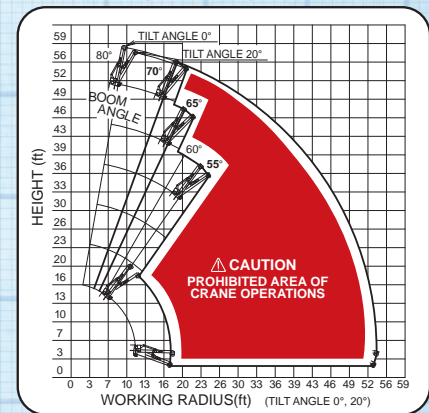
### Working Radius



### LOAD CHART Lifting capacity varies depending on outrigger configuration and boom length and angle.

BOOM SECTION 1 EXTENDED   BOOM SECTIONS 1 + 2 EXTENDED											
Working Radius (ft.)	6.5	8	10	11	13	15	17	18.6			
Outriggers Maximum (lbs.)	6,680	6,680	5,150	4,570	3,760	3,180	2,780	2,420			
Outriggers Halfway (lbs.)	6,680	6,680	5,100	4,520	3,600	2,750	2,100	1,760			
Outriggers Minimum (lbs.)	6,680	6,680	4,730	3,700	2,550	2,000	1,500	1,100			
BOOM SECTIONS 1 + 2 + 3 EXTENDED											
Working Radius (ft.)	8.5	10	11	13	15	16	18	20	23	25.8	
Outriggers Maximum (lbs.)	5,000	4,580	3,950	3,150	2,710	2,500	2,160	1,870	1,580	1,360	
Outriggers Halfway (lbs.)	5,000	4,500	3,900	3,150	2,570	2,350	1,870	1,410	1,050	880	
Outriggers Minimum (lbs.)	4,880	4,500	3,800	2,770	2,250	2,000	1,500	1,130	720	480	
BOOM SECTIONS 1 + 2 + 3 + 4 EXTENDED											
Working Radius (ft.)	13	15	16	20	23	26	30	33			
Outriggers Maximum (lbs.)	2,330	2,080	1,960	1,650	1,430	1,220	1,080	900			
Outriggers Halfway (lbs.)	2,330	2,060	1,940	1,500	1,170	910	650	500			
Outriggers Minimum (lbs.)	2,330	1,810	1,540	1,050	740	560	330	260			
BOOM SECTIONS 1 + 2 + 3 + 4 + 5 EXTENDED											
Working Radius (ft.)	15	16	20	23	26	30	33	36	40.2		
Outriggers Maximum (lbs.)	1,670	1,480	1,100	920	820	710	650	590	570		
Outriggers Halfway (lbs.)	1,670	1,480	1,070	920	780	650	550	440	350		
Outriggers Minimum (lbs.)	1,670	1,480	910	610	470	340	260	200	80		
BOOM SECTIONS 1 + 2 + 3 + 4 + 5 + 6 EXTENDED											
Working Radius (ft.)	16	18	20	23	26	30	33	36	39	43	47.3
Outriggers Maximum (lbs.)	720	660	610	550	510	450	410	370	350	300	280
Outriggers Halfway (lbs.)	720	660	610	550	510	450	410	330	270	190	150
Outriggers Minimum (lbs.)	730	670	620	550	450	290	240	170	130	110	80

### Extension Jib Working Range



### Rated Load for Extension Jib in lbs.

1st to 4th BOOM SECTIONS												
Boom Angle	78°	75°	70°	65°	60°	55°	50°	40°	30°	20°	10°	0°
Tilt Angle 0°	1,540	1,540	1,100	770	440	220	<b>PROHIBITED AREA OF CRANE OPERATIONS</b>					
Tilt Angle 20°	1,540	1,540	1,100	770	440	220						
Tilt Angle 40°	1,540	1,540	880	440	220							
Tilt Angle 60°	1,540	1,540	880	440	220							
5th BOOM SECTION ONLY												
Boom Angle	78°	75°	70°	65°	60°	55°	50°	40°	30°	20°	10°	0°
Tilt Angle 0°	990	990	660	330	<b>PROHIBITED AREA OF CRANE OPERATIONS</b>							
Tilt Angle 20°	990	990	660	330								
Tilt Angle 40°	990	880	440									
Tilt Angle 60°	990	880	440									
6th BOOM SECTION ONLY												
Boom Angle	78°	75°	70°	65°	60°	55°	50°	40°	30°	20°	10°	0°
Tilt Angle 0°	990	990	920	<b>PROHIBITED AREA OF CRANE OPERATIONS</b>								
Tilt Angle 20°	990	990	920									
Tilt Angle 40°	990	990	920									
Tilt Angle 60°	990	990	920									

### Rated Load for Searcher Hook in lbs.

1st to 4th BOOM SECTIONS											
Working Radius (ft.)	14	16	19	23	26	29	32	36	39		
Outriggers Maximum (lbs.)	1,540	1,120	900	770	660	560	360	220	<b>PROHIBITED AREA OF CRANE OPERATIONS</b>		
Outriggers Halfway (lbs.)	1,540	1,120	900	650	450	250					
Outriggers Minimum (lbs.)	1,540	1,020	720	210							
5th BOOM SECTION ONLY											
Working Radius (ft.)	13	16	19	23	26	29	32	36	39	42	46
Outriggers Maximum (lbs.)	990	890	680	550	440	330	290	220	<b>PROHIBITED AREA OF CRANE OPERATIONS</b>		
Outriggers Halfway (lbs.)	990	890	680	550	440	330	240				
Outriggers Minimum (lbs.)	990	890	480	210							
6th BOOM SECTION ONLY											
Working Radius (ft.)	16	18	19	23	26	29	32	36	39	42	46
Outriggers Maximum (lbs.)	990	890	680	550	<b>PROHIBITED AREA OF CRANE OPERATIONS</b>						
Outriggers Halfway (lbs.)	990	890	680	550							
Outriggers Minimum (lbs.)	990	890	480	210							

# URW376 MINI-CRAWLER CRANE

		URW376C2URS-1 Diesel	URW376C2MRS-1 Diesel/Electric	URW376C2BRS-1 Battery/Electric		
<b>Crane Capacity</b>	<b>Capacity:</b>	6,680 lbs. @ 8.20 ft.				
<b>Max Working Radius</b>	<b>Maximum:</b>	2.03 to 47.40 ft.				
<b>Tip Height</b>	<b>Approximate:</b>	52 ft. (58 ft. with optional jib)				
<b>Turning Radius (ft.)</b>	<b>Minimum:</b>	Turns within its dimensions				
<b>Dimensions (ft.)</b>	<b>Folded: (w x h x l)</b>	4.24 x 5.91 x 14.24				
<b>Weight</b>	<b>Unladen:</b>	8488 lbs.	8760 lbs.	8760 lbs.		
<b>Outrigger Point Loading</b>	<b>Maximum:</b>	Specific point landing available upon request				
<b>Winch Speed</b>	<b>Approximate:</b>	Single line speed: 223.1 ft./minute at 4th layer Hook Speed: 55.77 ft./min at 4th layer with 4-part line				
<b>Telescopic System</b>	<b>Boom Length:</b>	11.9 to 47.93 ft				
	<b>Hydraulic Telescopic with Holding Valves:</b>	36 ft. / 23 Seconds				
	<b>Boom Type:</b>	6-Section, hydraulically telescoping boom, hexagonal box construction				
<b>Boom Lift Speed</b>	<b>Hydraulic with Holding Valves:</b>	0° - 80°/ 10 sec				
<b>Swing Rotation</b>	<b>Worm Drive:</b>	360° Continuous				
<b>Traction System</b>	<b>Travel Speed:</b>	Two Speed:	Low: 1.86 mph	High: 3.92 mph		
	<b>Gradability:</b>	23°				
	<b>Track Ground Pressure:</b>	5.22 psi				
<b>Engine/Motor</b>	<b>Type:</b>	Diesel	Diesel	Electric	Battery	Electric
	<b>Manufacturer:</b>	Yanmar	Yanmar	AC	DC	AC
	<b>Tank Capacity:</b>	10.57 gal	10.57 gal		N/A	
	<b>Maximum Output:</b>	24.5 HP	24.5 HP	10 HP*	48V	110V*
	<b>Starting Method:</b>	Electric Start			N/A	
<b>Standard / Options &amp; Safety Equipment</b>	<ul style="list-style-type: none"> <li>• Full-function radio remote control</li> <li>• Centrally located infinite variable controls</li> <li>• Onboard self-diagnostic computer system</li> <li>• Hexagonal boom</li> <li>• Anti-two block system</li> <li>• Automatic hook stow system</li> <li>• 5 Axis fixed Glass Manipulator - Direct attachment to boom for rigid application</li> <li>• Over-winding prevention device and alarm</li> <li>• MYLAR® non-marking tracks for indoor applications</li> <li>• Minimum wire rope automatic stop</li> <li>• Hydraulic circuit pressure relief valve with bubble-style level for outrigger leveling</li> <li>• Rated Capacity Indicator (L.M.I.)</li> <li>• Interlock Monitoring Outrigger and Boom System</li> <li>• Custom SPYDERCRANE trailer with track mats, tool box, outrigger pads and fuel containers</li> </ul> <p>* Electric Models are available in 208-230V 1Ø, 208-230V 3Ø and 440-460V 3Ø</p>					

**SPYDERCRANE** by **UNIC**  
RETOOLING INDUSTRIES

Visit us on the web at  
**SPYDERCRANE.COM**

Product specifications are subject to change without notice. No specific training or license is required to operate the SPYDERCRANE in most areas, but operators are responsible for knowing and meeting all safety requirements and regulations.

Distributed by **Smiley Lifting Solutions** | 5326 W. Mohave Street | Phoenix, AZ 85043 | **800.452.5011**